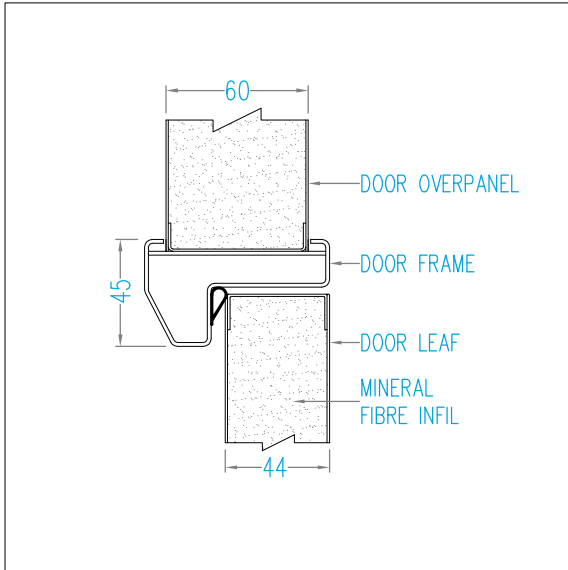
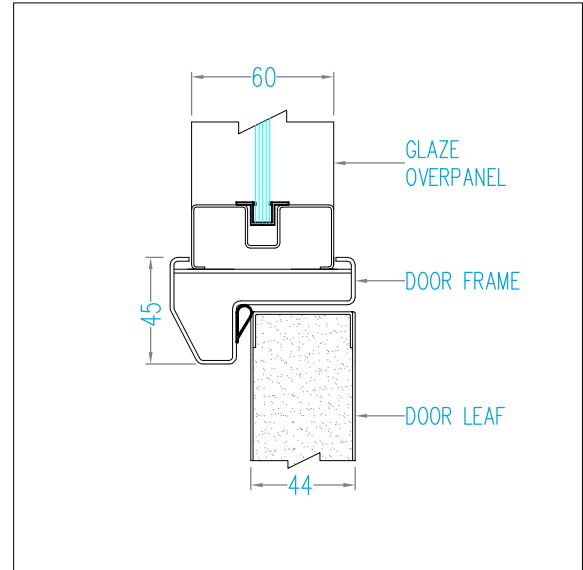


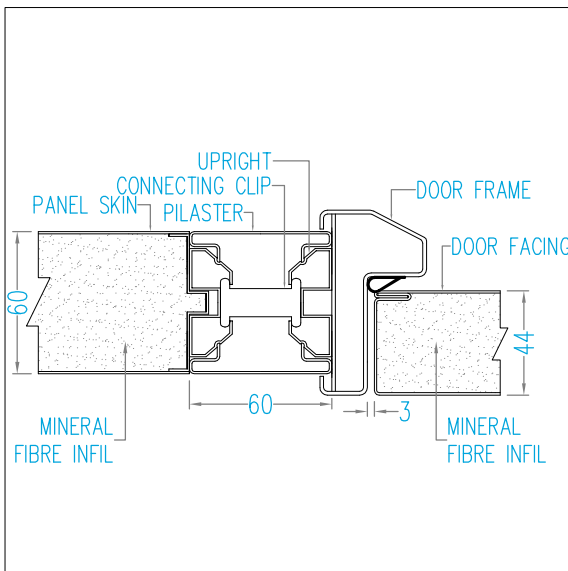
### DOOR DETAIL



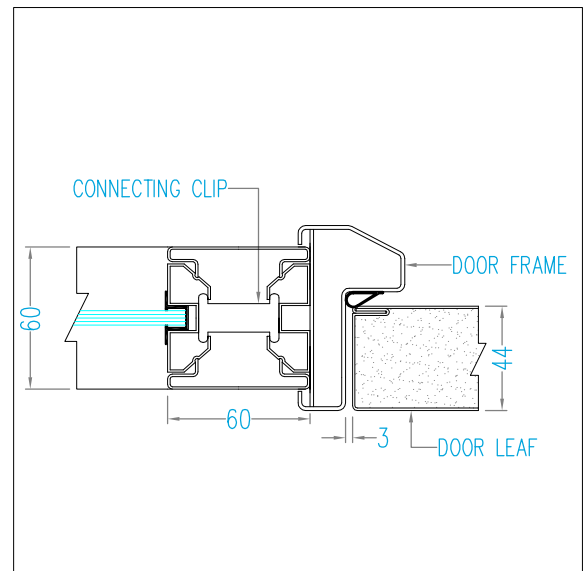
OVER PANEL-SOLID



OVER PANEL-GLAZED

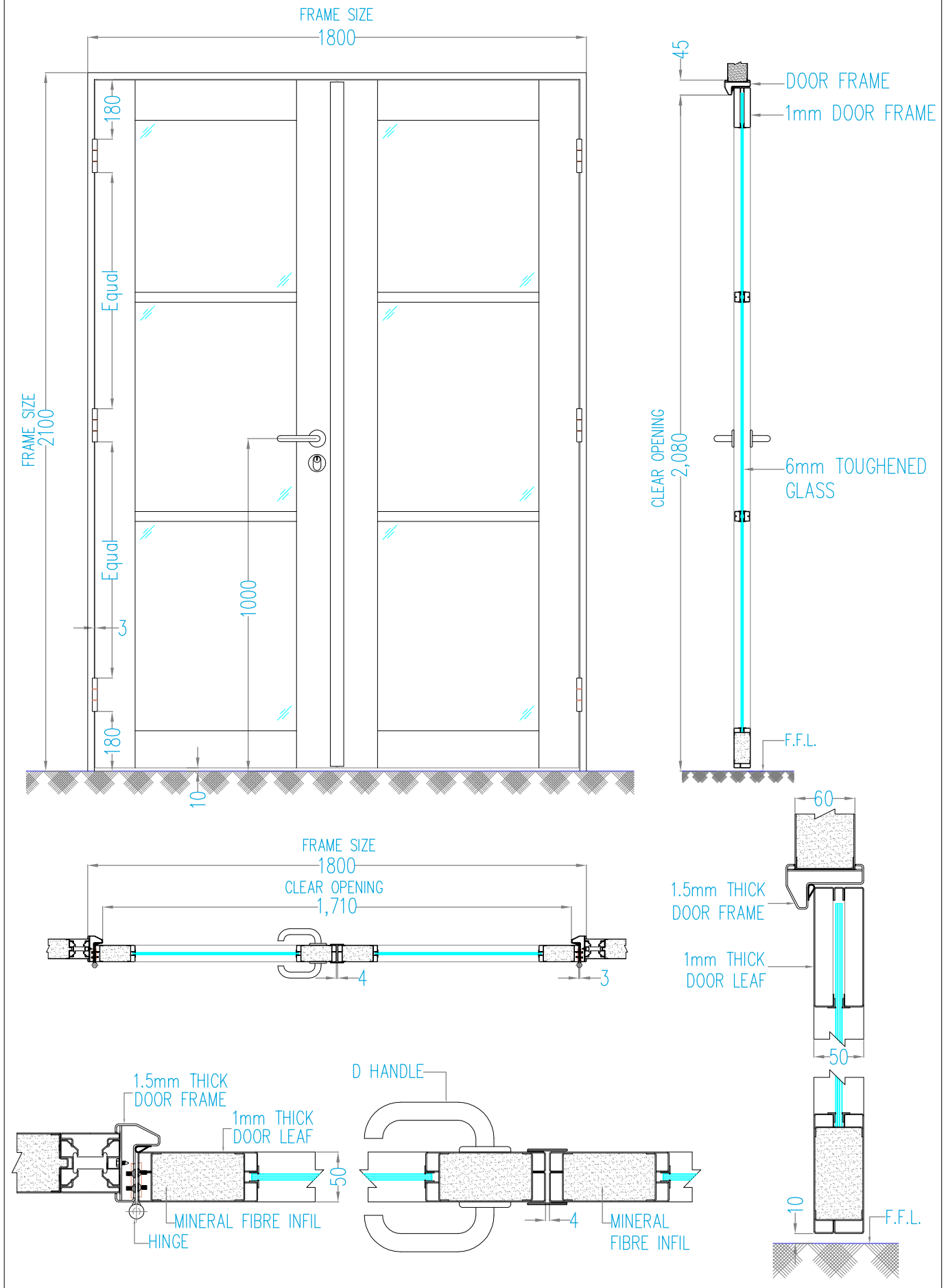


SOLID TO DOOR

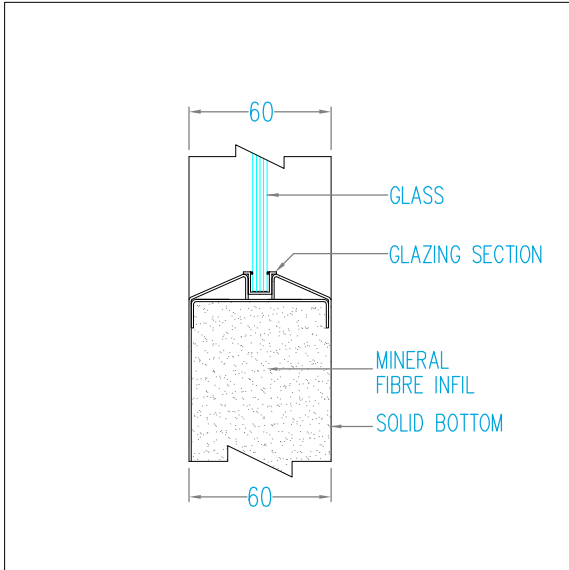


GLAZED TO DOOR

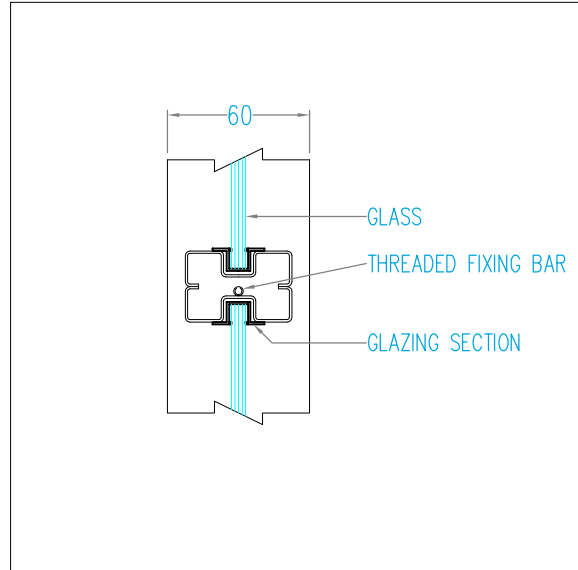
### DOUBLE DOOR UNIT



**HALF GLAZE PANEL**

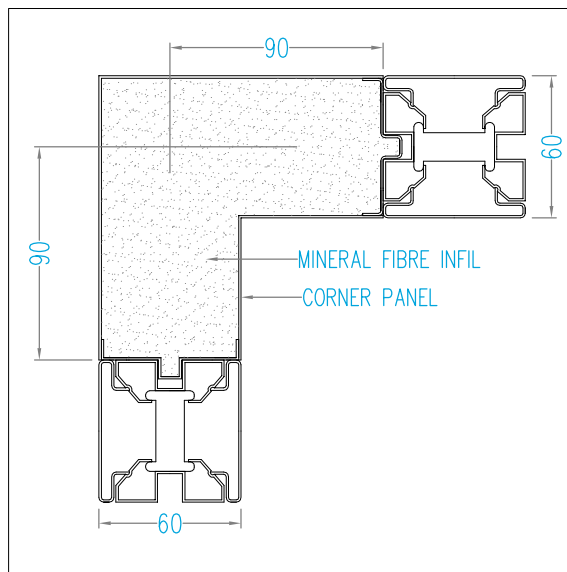


HALF GLAZE PANEL



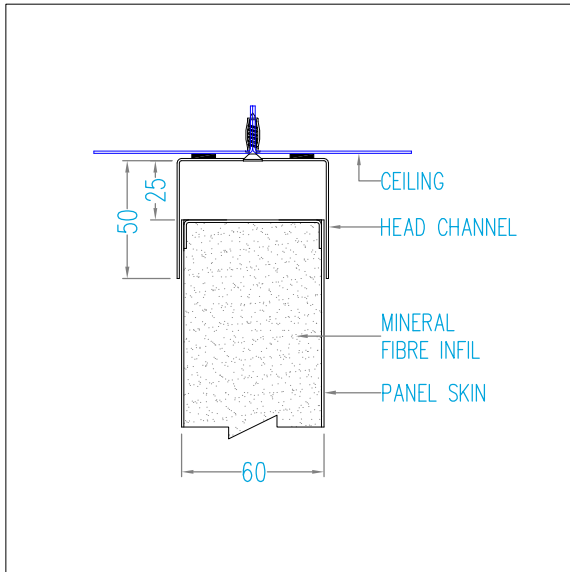
TRANSOM JOINT-GLAZED TO GLAZED

**CORNER PANEL**

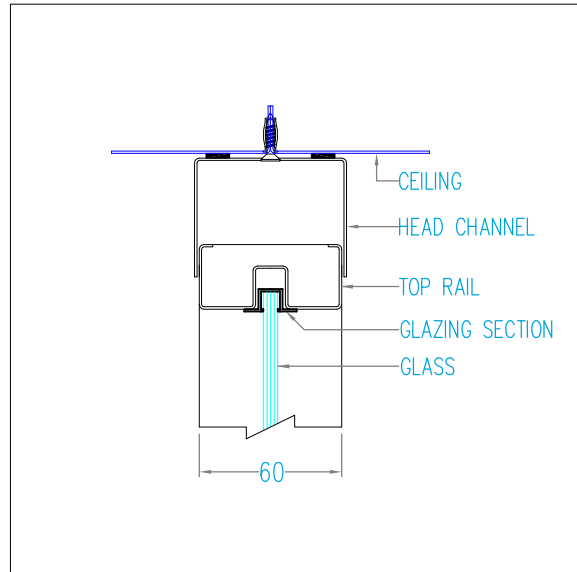


90° CORNER

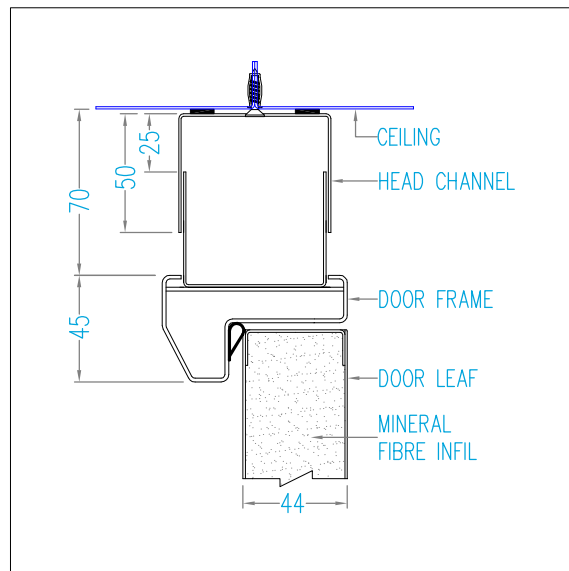
### HEAD DETAIL



CEILING CONNECTION TO SOLID UNIT

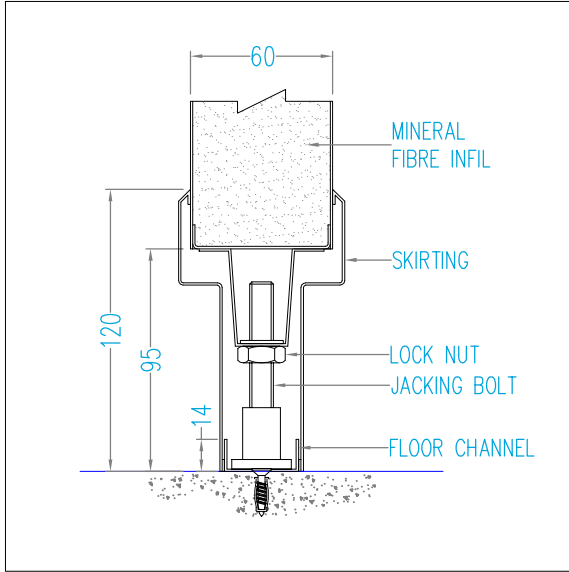


CEILING CONNECTION TO GLAZED UNIT

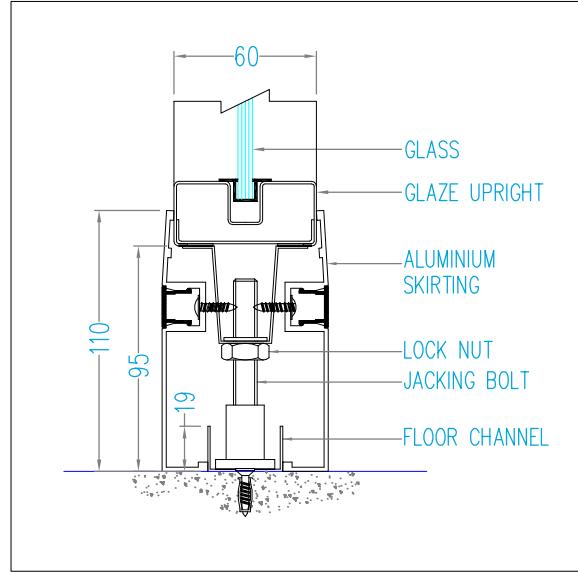


CEILING CONNECTION TO DOOR UNIT

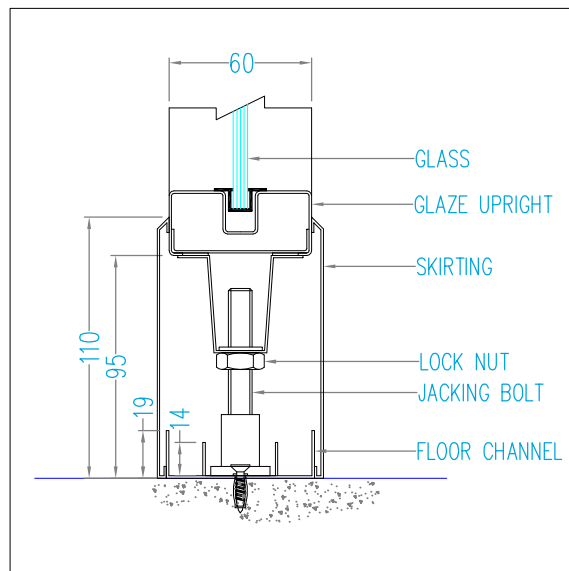
### PANEL BASES



RECESSED SKIRTING

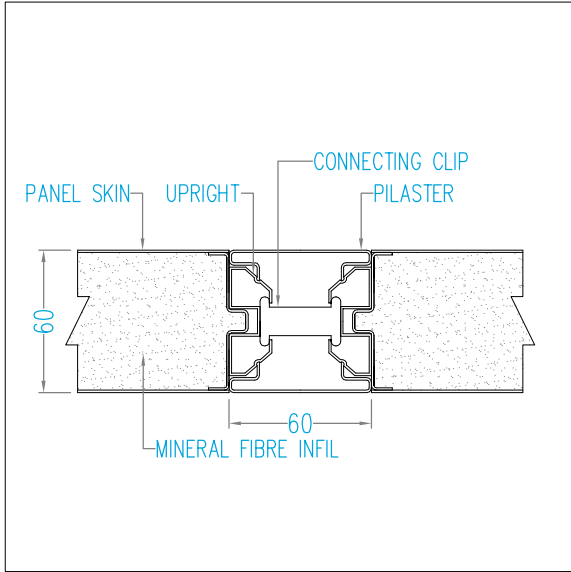


ALUMINIUM SKIRTING

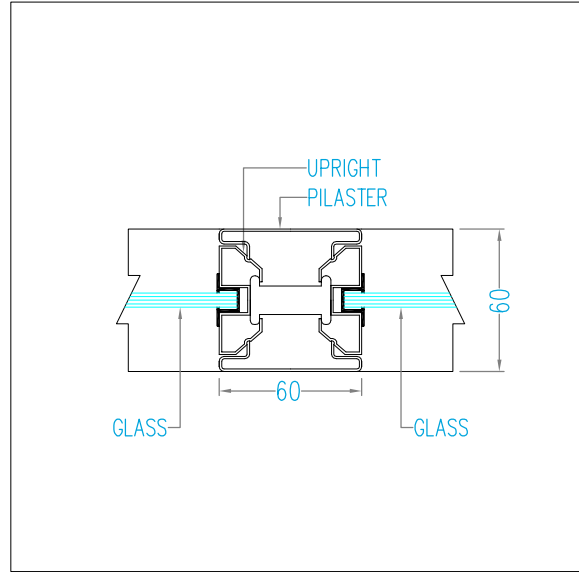


FLUSH SKIRTING

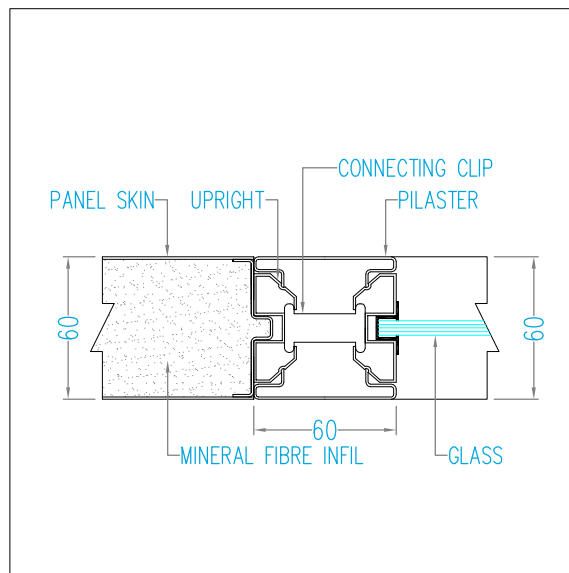
**PANEL CONNECTIONS**



**PILASTER JOINT-SOLID TO SOLID**

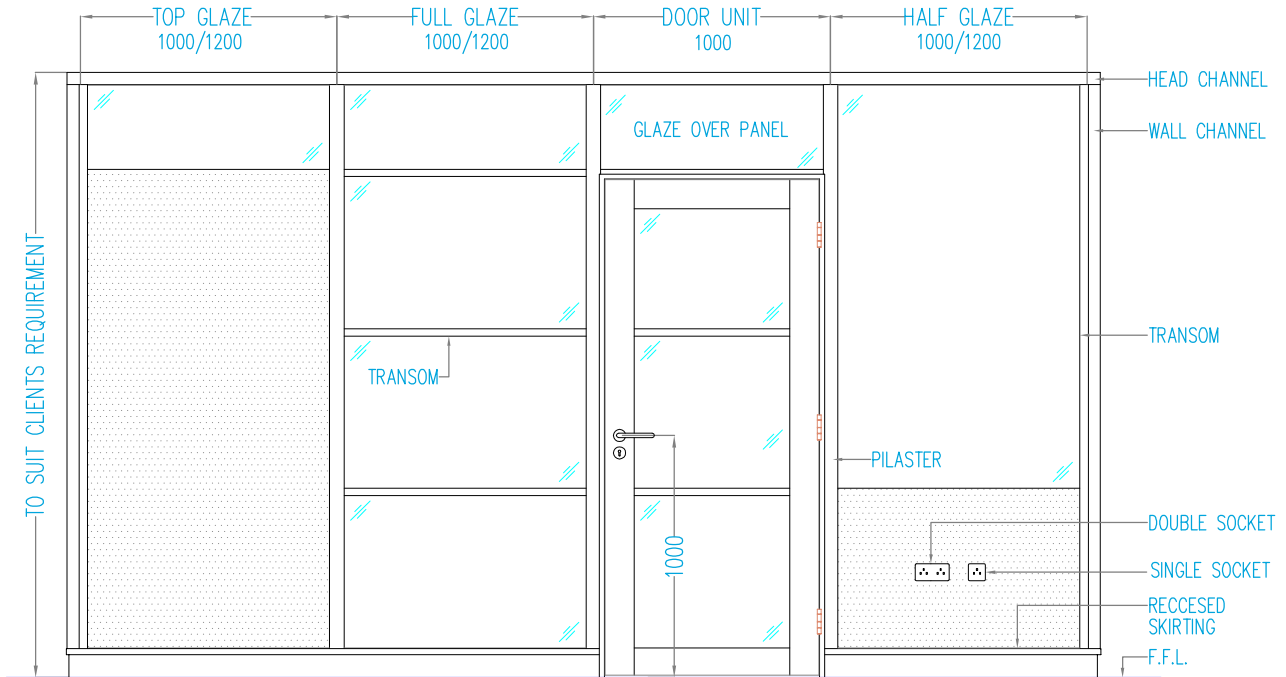


**PILASTER JOINT-GLAZED TO GLAZED**

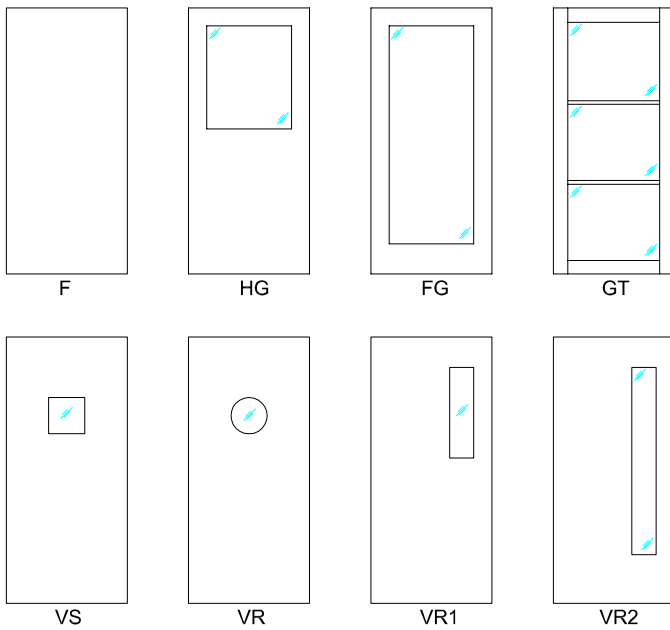


**PILASTER JOINT-SOLID TO GLAZED**

### PANEL TYPES

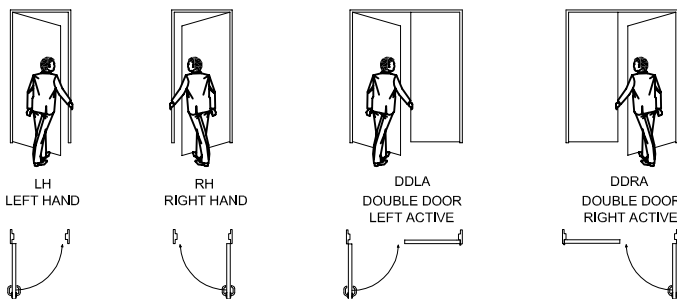


### DOOR DESIGN

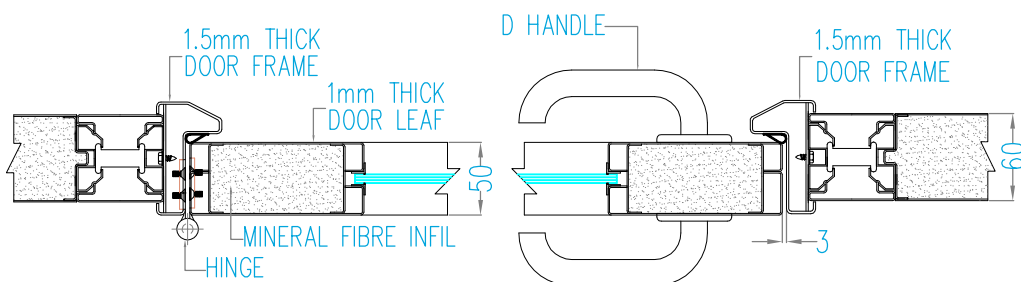
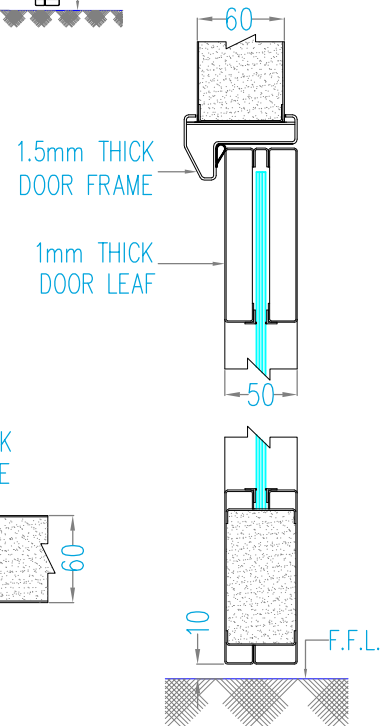
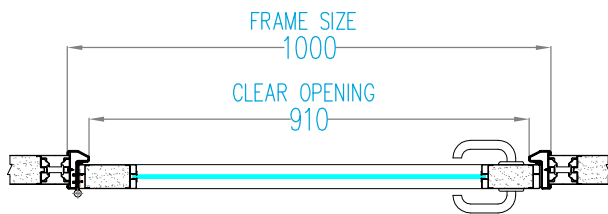
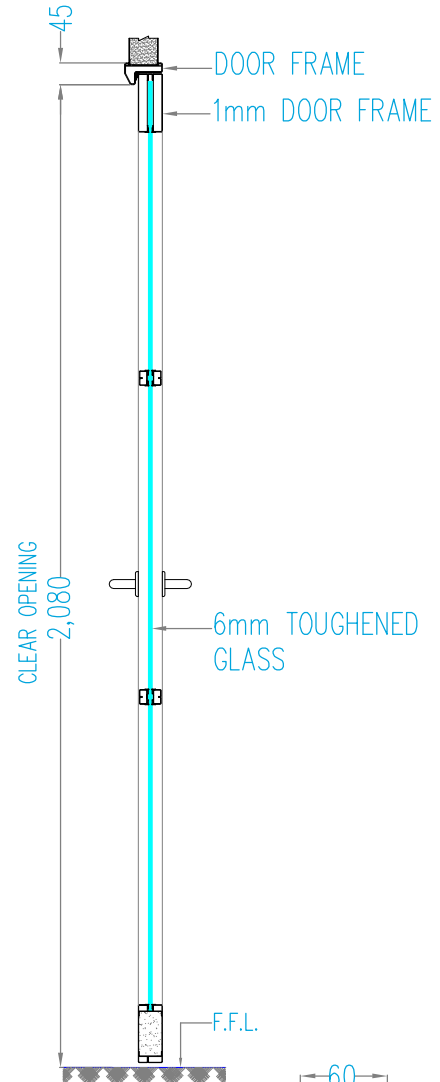
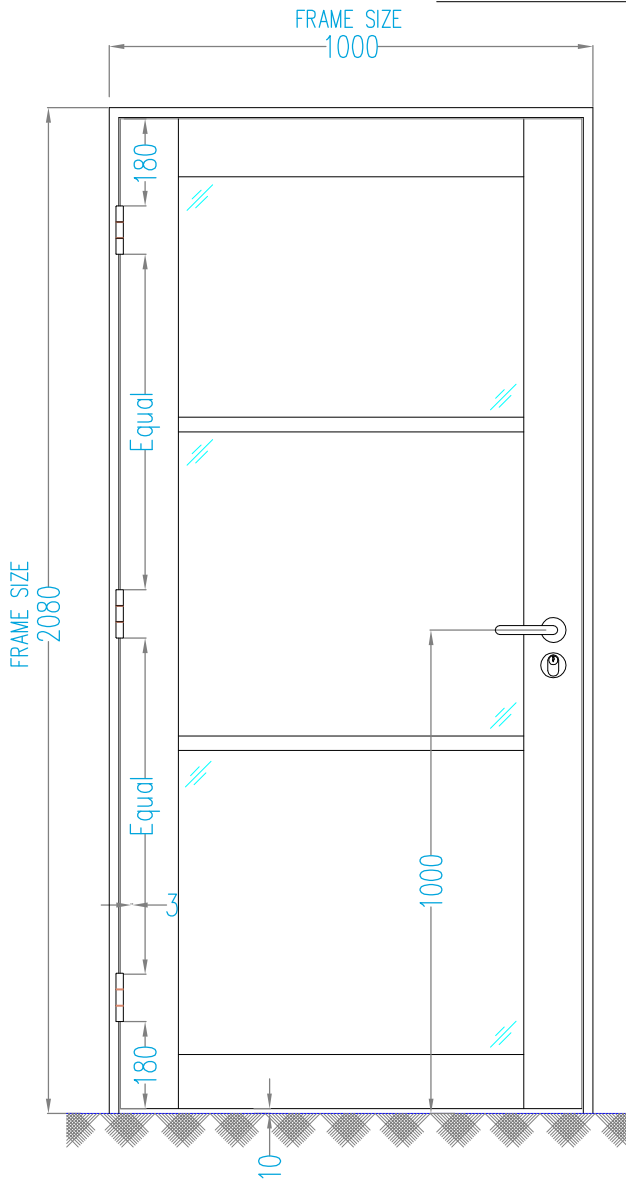


- F - Full Solid
  - HG - Half Glaze
  - FG - Full Glaze
  - GT - Glaze with Transom
  - VS - Vision Square(300mmx300mm)
  - VR - Vision Round(300mm dia)
  - VR1 - Vision Rectangle
  - VR2 - Vision Rectangle
- Other designs available to individual clients specifications

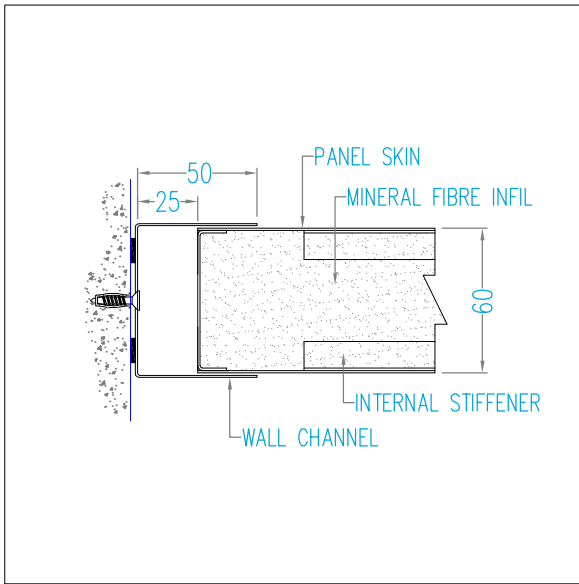
### DOOR HANDING



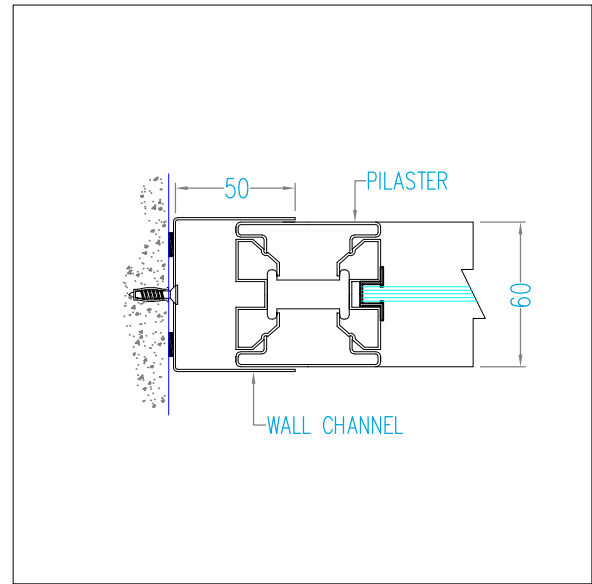
### SINGLE DOOR UNIT



### WALL CONNECTIONS

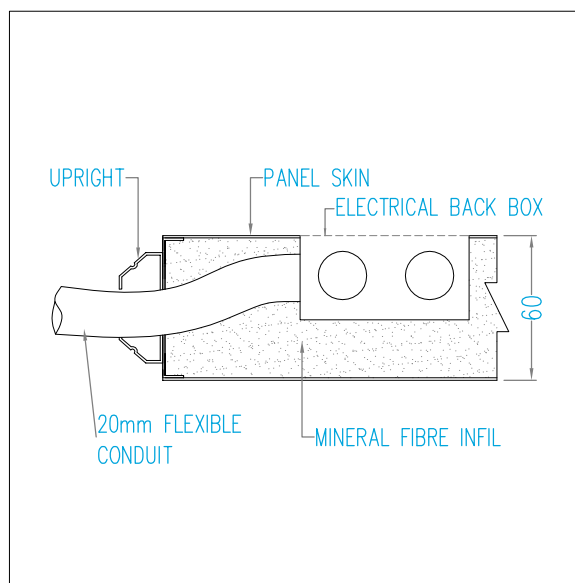


SOLID UNIT TO WALL



GLAZED UNIT TO WALL

### ELECTRICAL CUTOUTS



SOLID UNIT WITH ELECTRICAL CUTOUTS